

For Sale or Lease

±2,678 SF | Medical Office Building

3741 Sunset Lane | Antioch, CA

Highlights



Free standing
±2,678 SF building
situated on ±0.46
acres



Vacant: Ideal
owner/occupier
business property



Circular driveway
servicing the
building, and
abundant parking



Located directly
adjacent to Sutter
Delta Hospital,
Antioch CA



Retail and food
services within a
short walk

Contact Brokers

Eric Erickson, CCIM, SIOR

Executive Vice President
CA License No. 01177336
eric.erickson@colliers.com
+1 925 279 5580

Curt Scheve, SIOR

Executive Vice President
CA License No. 00916122
curt.scheve@colliers.com
+1 925 279 5593

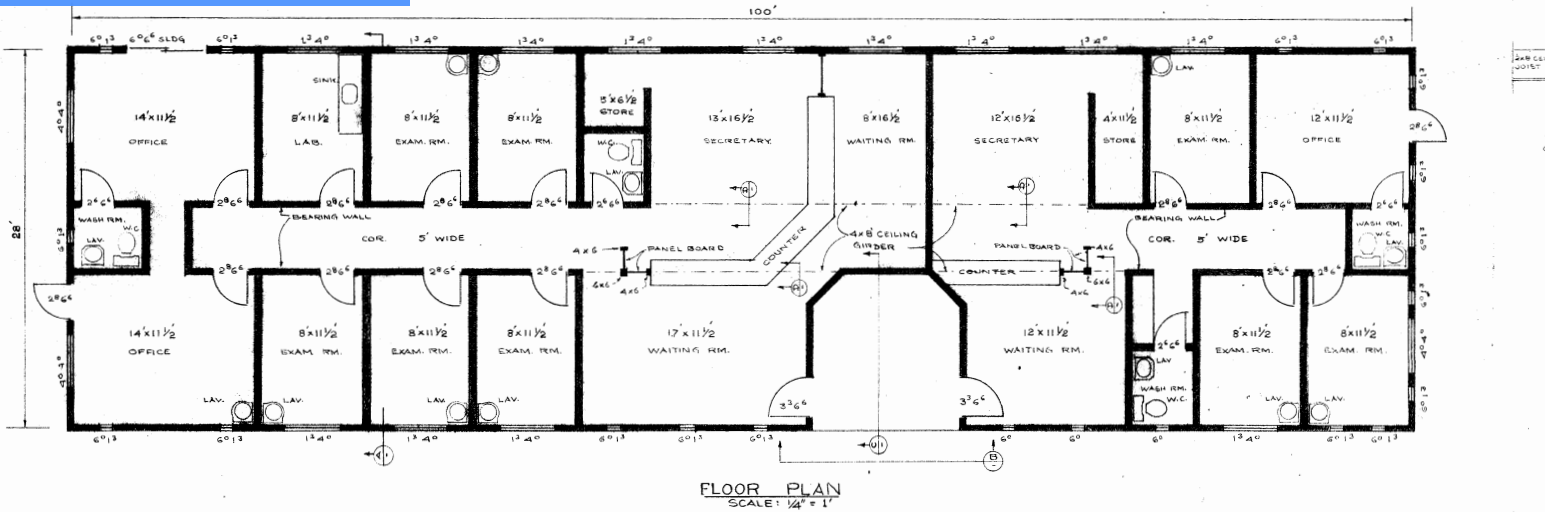
Colliers

1850 Mt. Diablo Blvd,
Suite 200
Walnut Creek, CA 94596
colliers.com

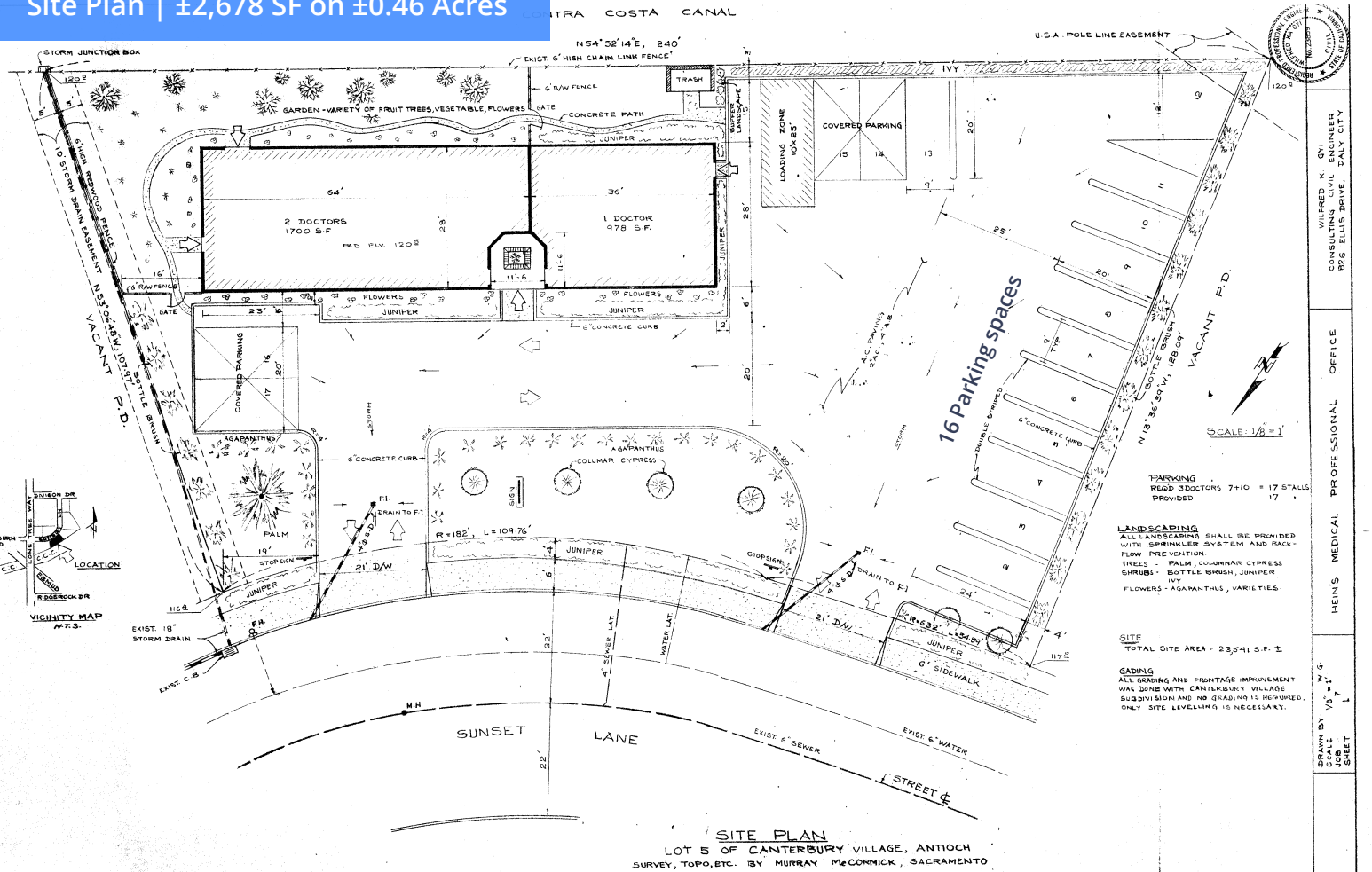
3741 Sunset Lane | Antioch, CA



Floor Plan | ±2,678 SF



Site Plan | ±2,678 SF on ±0.46 Acres



PREPARED BY: WALTER K. GUY, CONSULTING CIVIL ENGINEER, 285 ELLIS DRIVE, DAILY CITY, CA 94534
 HEIN'S MEDICAL PROFESSIONAL OFFICE
 DRAWN BY: VS, 17
 SCALE: 1/8" = 1'
 SHEET: 17

3741 Sunset Lane | Antioch, CA

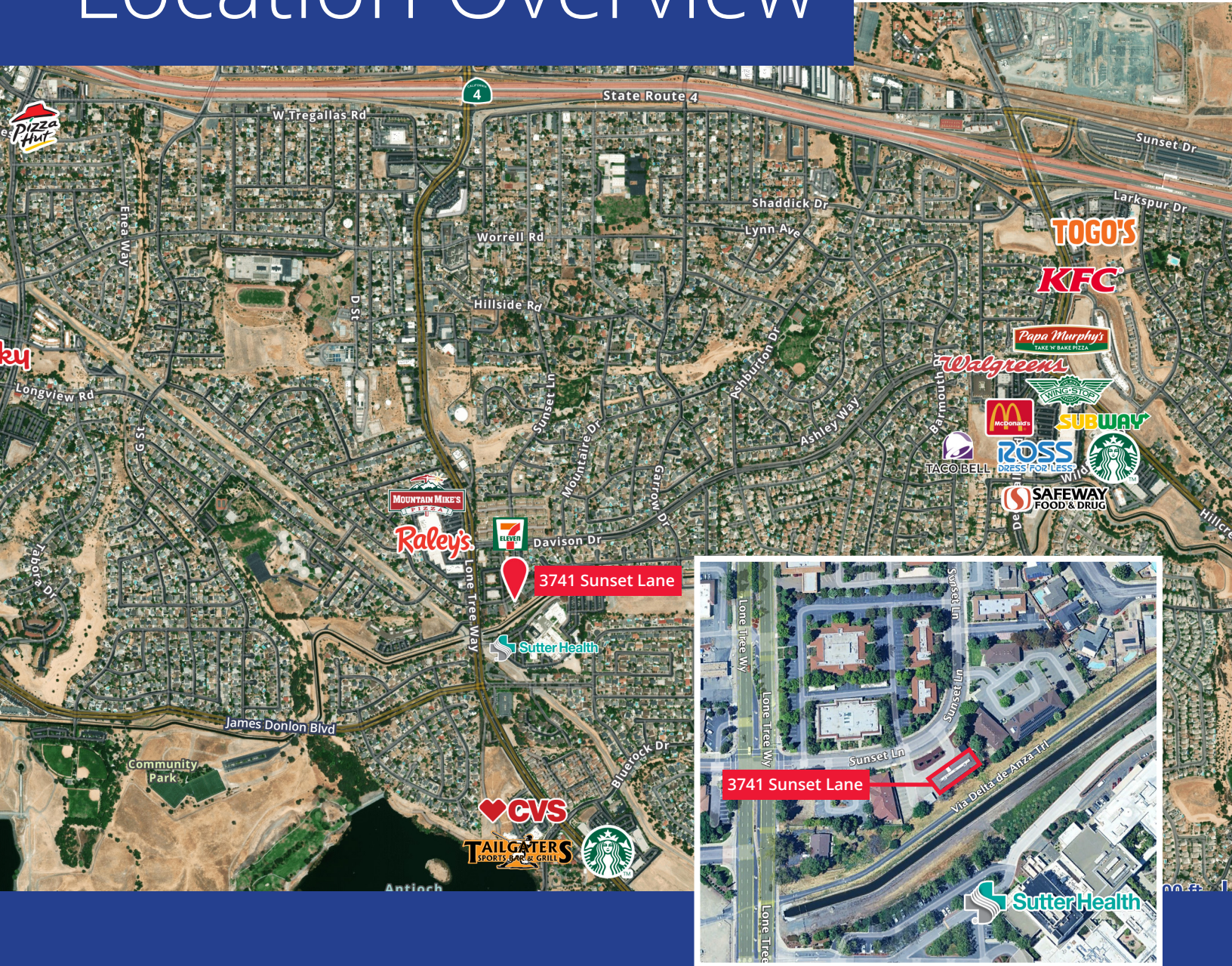
Antioch Zoning



Use	Zoning (Commercial Office)	Permit
Day-care centers	C-0	U
Hospice	C-0	U
Government offices	C-0	P
Psychiatric/chemical dependency	C-0	U
Medical care—urgent	C-0	U
Religious assembly	C-0	U
Schools, private and preschools	C-0	U
Laboratories; medical, dental, optical	C-0	P
Medical (includes clinics)	C-0	P
Pharmacy	C-0	P
Veterinary Services	C-0	P

3741 Sunset Lane | Antioch, CA

Location Overview



Demographics 5 mile radius



Total Population

180,674



Households

55,385



Median Household
Income

\$103,448



Annual Household
Spending:
Health Care

\$8,238