



For Lease

Office Space Available

2280 Diamond Boulevard | Concord, CA

Highlights



This five building office complex features all ground floor suites with exterior entrances and easy surface parking. Generous tenant improvement allowances are available.



Premier location on the corner of Diamond Boulevard and Burnett Avenue across from the Vernada Shopping Center and just North of the Willows Shopping Center.

Contact Brokers

Brian Clack

Senior Vice President
CA License No. 01416362
brian.clack@colliers.com
+1 925 279 4654

Eric Erickson, SIOR

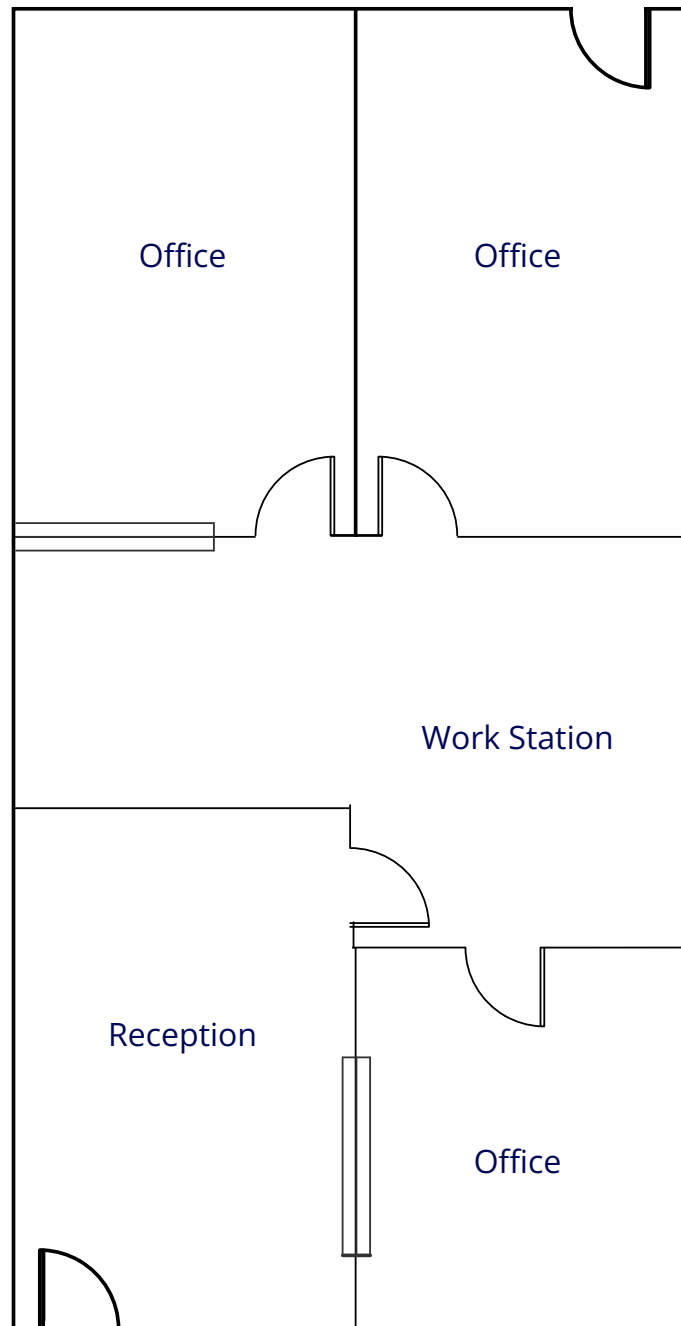
Executive Vice President
CA License No. 01177336
eric.erickson@colliers.com
+1 925 279 5580

2280 Diamond Blvd | Concord, CA

Floor Plan

Suite 150 | ±840 RSF

- 3 private offices
- Work station area
- Reception
- Upgraded LED lighting

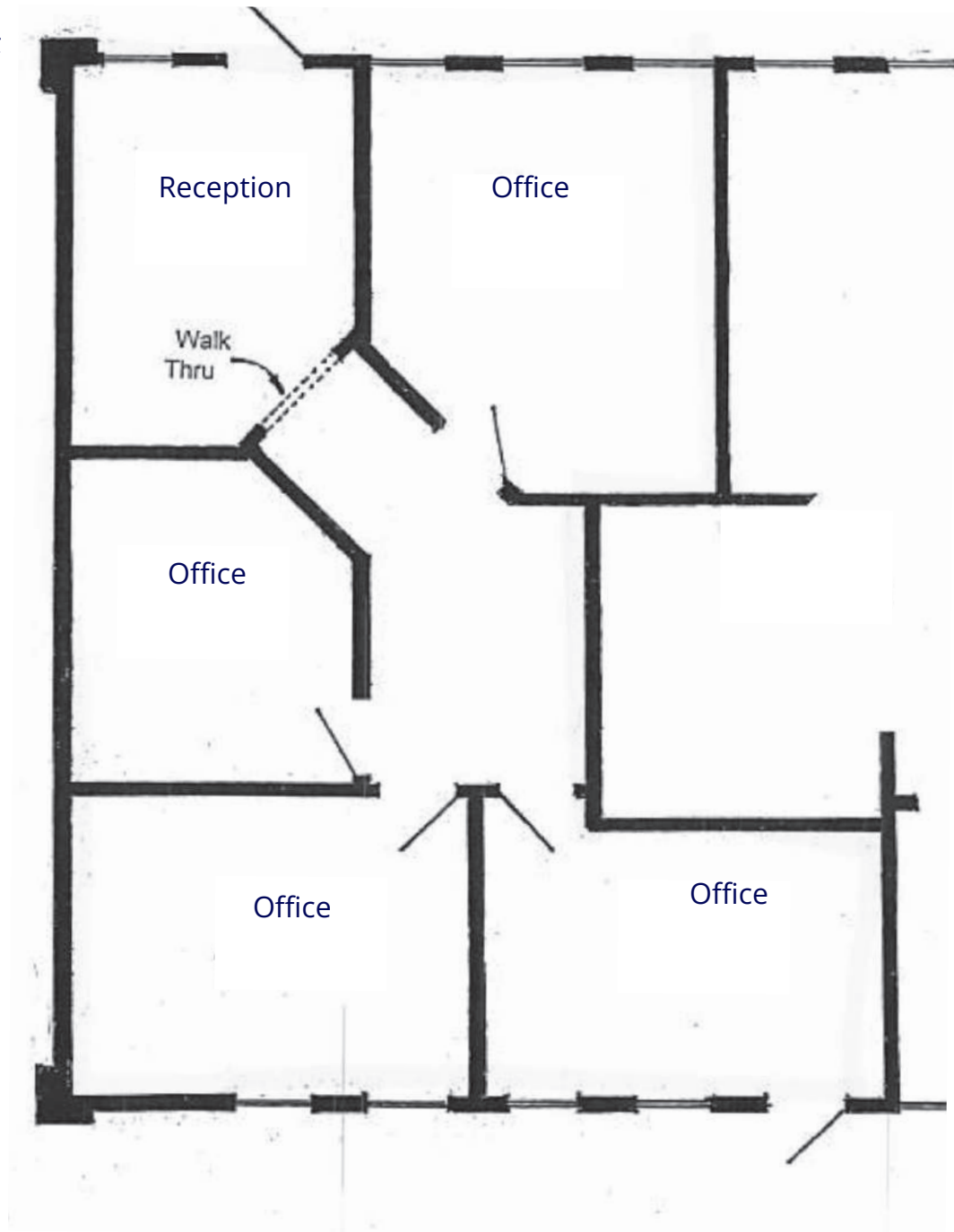


2280 Diamond Blvd | Concord, CA

Floor Plan

Suite 460 | ±1,016 RSF

- 4 offices
- Reception



2280 Diamond Blvd | Concord, CA

Photo Gallery



Shared Courtyard



Ample Parking



2280 Diamond Blvd | Concord, CA

Location Overview



Demographics *3 mile radius*



128,492

Total Population



6,476

Total Businesses



70,072

Total Employees



\$104,605

Median HH Income

