



For Lease | Small & Medium Office Spaces Available

Olympic Plaza II

1910 Olympic Boulevard | Walnut Creek

Contact Brokers

Eric Erickson, SIOR

Executive Vice President
CA License No. 01177336
eric.erickson@colliers.com
+1 925 279 5580

Brian Clack

Senior Vice President
CA License No. 01416362
brian.clack@colliers.com
+1 925 279 4654

Olympic Plaza | Walnut Creek, CA

Overview



Highlights



Easy access to I-680
and Highway 24



Free 3/1,000
parking



Walking distance to
Broadway Plaza &
downtown shops



Tenant
improvements
to suit



Flexible
lease terms

Available Suites

Suite	Rentable Square Feet	 Virtual Tour
110	±3,329 RSF	Tour Suite »
120	±1,253 RSF	
210	±1,194 RSF	
325	±1,616 RSF	
345	±1,147 RSF	
370	±898 RSF	Tour Suite »

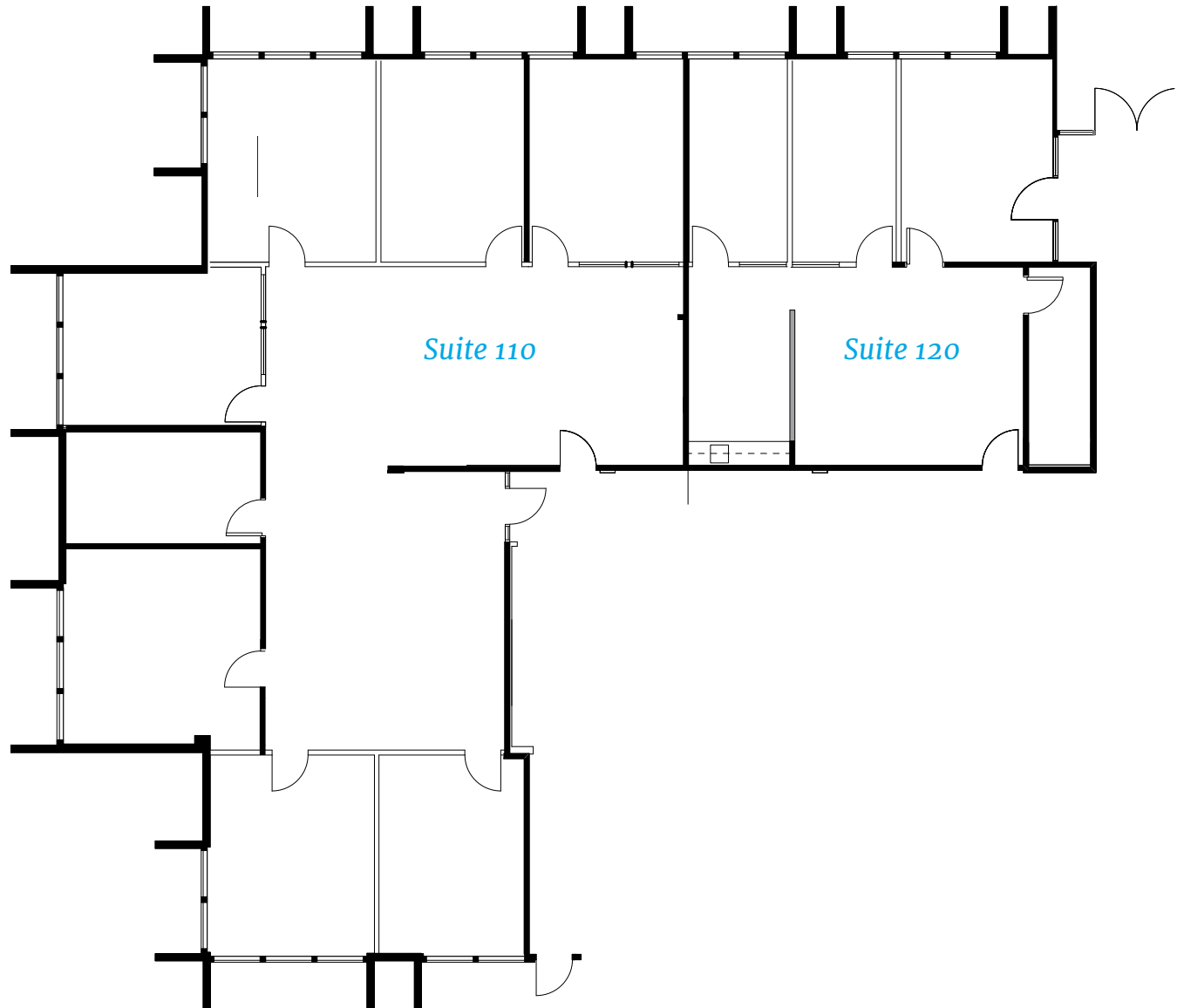
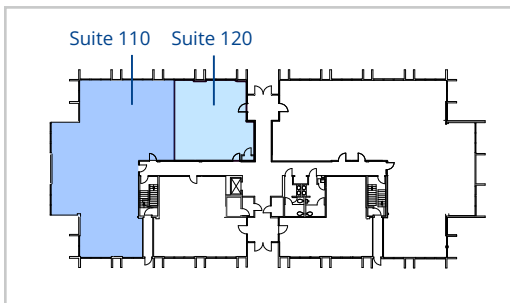
Floor Plan

Suite 110 | $\pm 3,329$ RSF

Suite 120 | $\pm 1,253$ RSF

Total SF | $\pm 4,582$ RSF

Key Plan | Floor 1

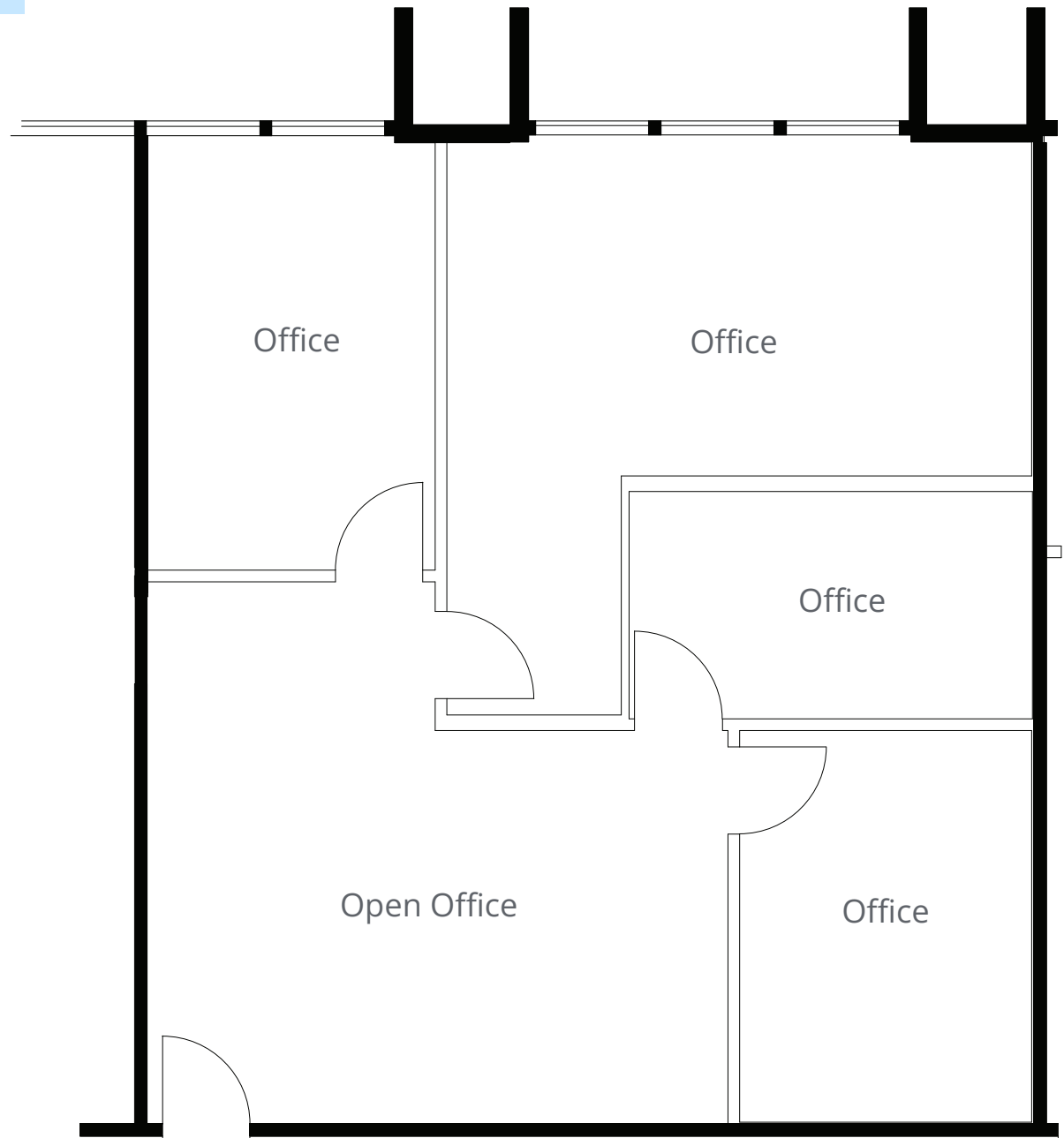
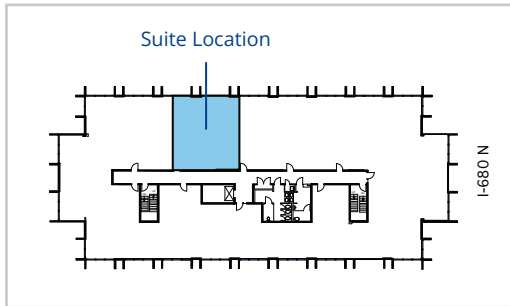


Olympic Plaza | Walnut Creek, CA

Floor Plan

Suite 210 | $\pm 1,194$ RSF

Key Plan | Floor 2



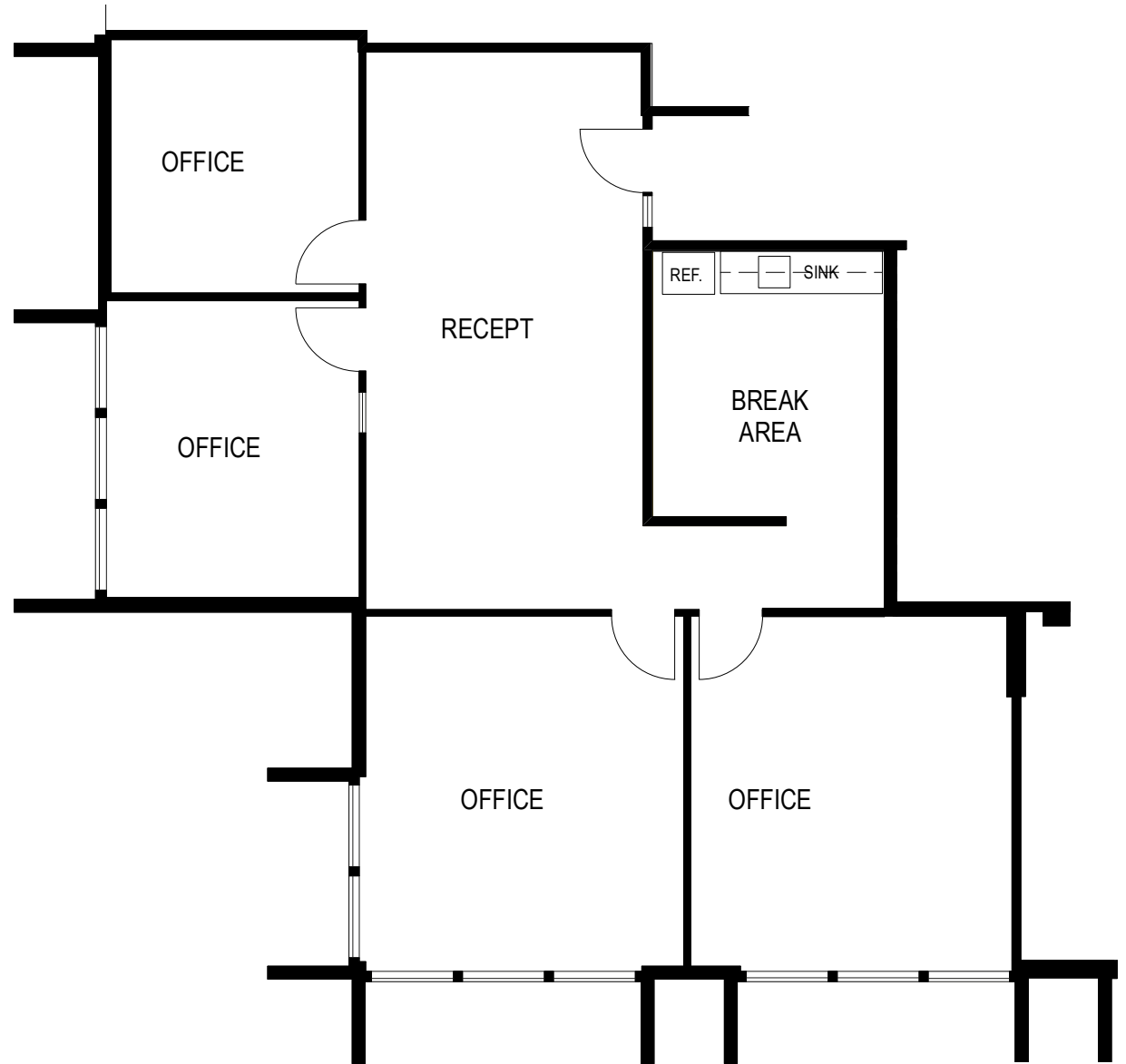
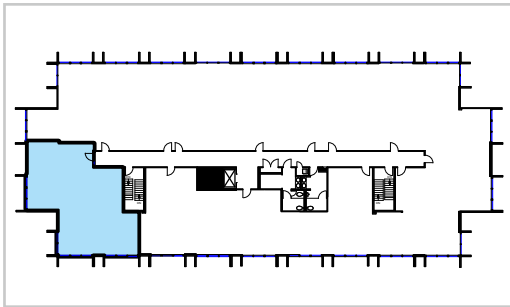
Olympic Plaza | Walnut Creek, CA

Floor Plan

Suite 325 | $\pm 1,616$ RSF

- Available June 2025

Key Plan | Floor 3



As Built Floor Plan

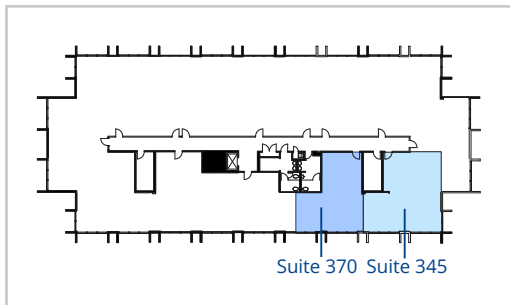
Suite 345 | $\pm 1,147$ RSF

- Available July 2025

Suite 370 | ± 898 RSF

Total SF | $\pm 2,045$ RSF

Key Plan | Floor 3



Concept Floor Plan

Suite 345 | $\pm 1,147$ RSF

- Available July 2025

Suite 370 | ± 898 RSF

Total SF | $\pm 2,045$ RSF

Key Plan | Floor 3

