



Colliers



For Lease | Monument Signage Available

Newell Plaza Offices

1211 Newell Avenue | Walnut Creek, CA

Contact Brokers

Eric Erickson, CCIM SIOR

Executive Vice President
CA License No. 01177336
eric.erickson@colliers.com
+1 925 279 5580

Brian Clack

Senior Vice President
CA License No. 01416362
brian.clack@colliers.com
Direct: +1 925 279 4654
Mobile: +1 415 407 7998

Highlights

Contact Brokers

Eric Erickson, CCIM SIOR

Executive Vice President
CA License No. 01177336
eric.erickson@colliers.com
+1 925 279 5580

Brian Clack

Senior Vice President
CA License No. 01416362
brian.clack@colliers.com
Direct: +1 925 279 4654
Mobile: +1 415 407 7998

- Highly visible location at the top of Newell Hill
- Two blocks from Broadway Plaza, the core of Walnut Creek's shopping and dining scene
- On-site 3.4 / 1,000 parking with covered, shaded stalls underneath building
- Easy access via South Broadway extension
- Building demises easily to accommodate small tenants up to full floor users
- Extensive common area & energy efficiency upgrades
- Brand New VRV HVAC system throughout. Individual suite control
- New CAT6 and fiber distribution throughout



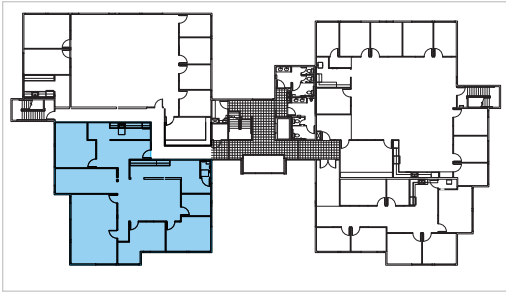
1211 Newell Avenue

Newell Plaza Offices | Walnut Creek

Suite 230

±3,087 RSF

Available: June 2025



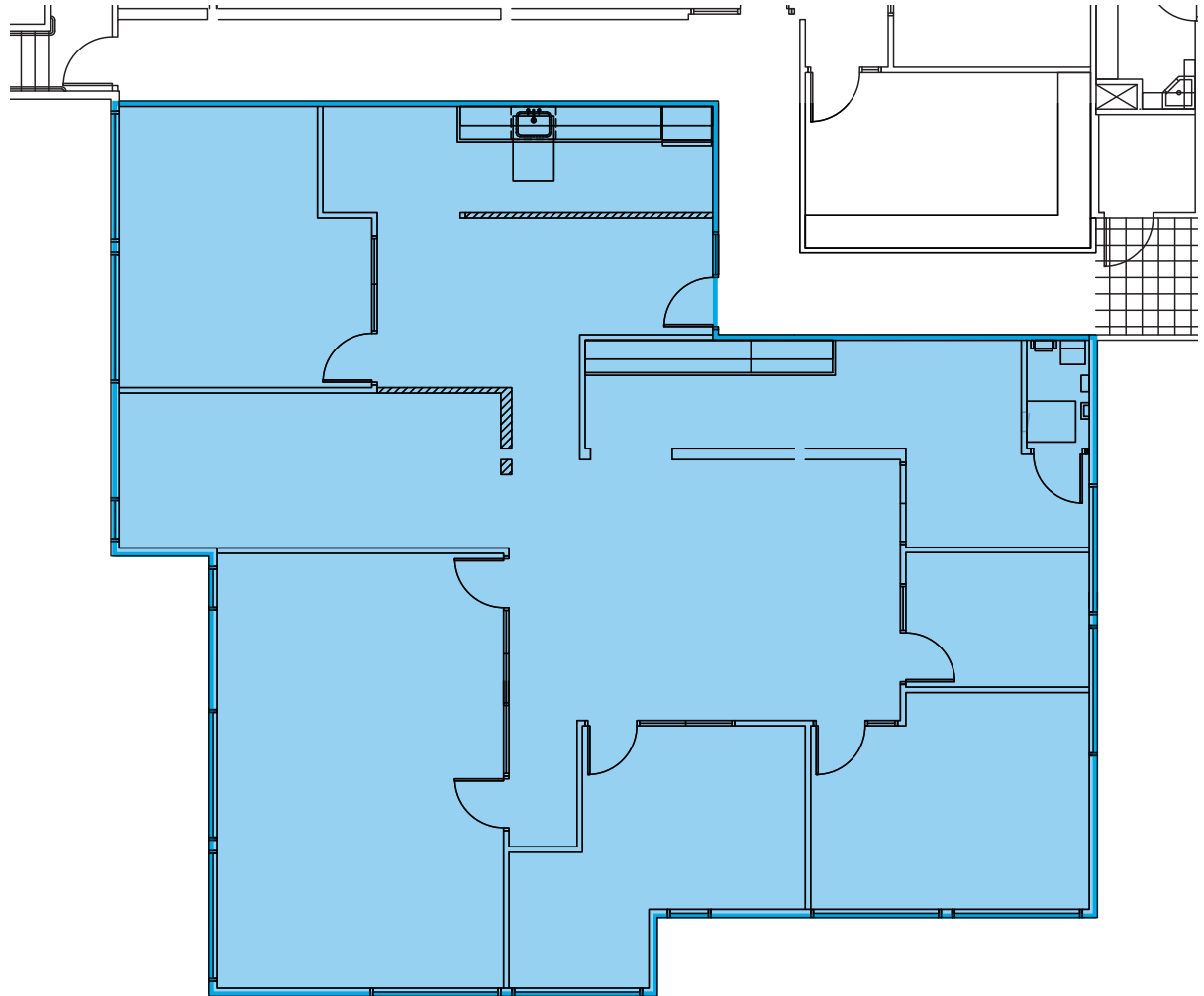
Contact Brokers

Eric Erickson, CCIM SIOR

Executive Vice President
CA License No. 01177336
eric.erickson@colliers.com
+1 925 279 5580

Brian Clack

Senior Vice President
CA License No. 01416362
brian.clack@colliers.com
Direct: +1 925 279 4654
Mobile: +1 415 407 7998



Copyright © 2025 Colliers.

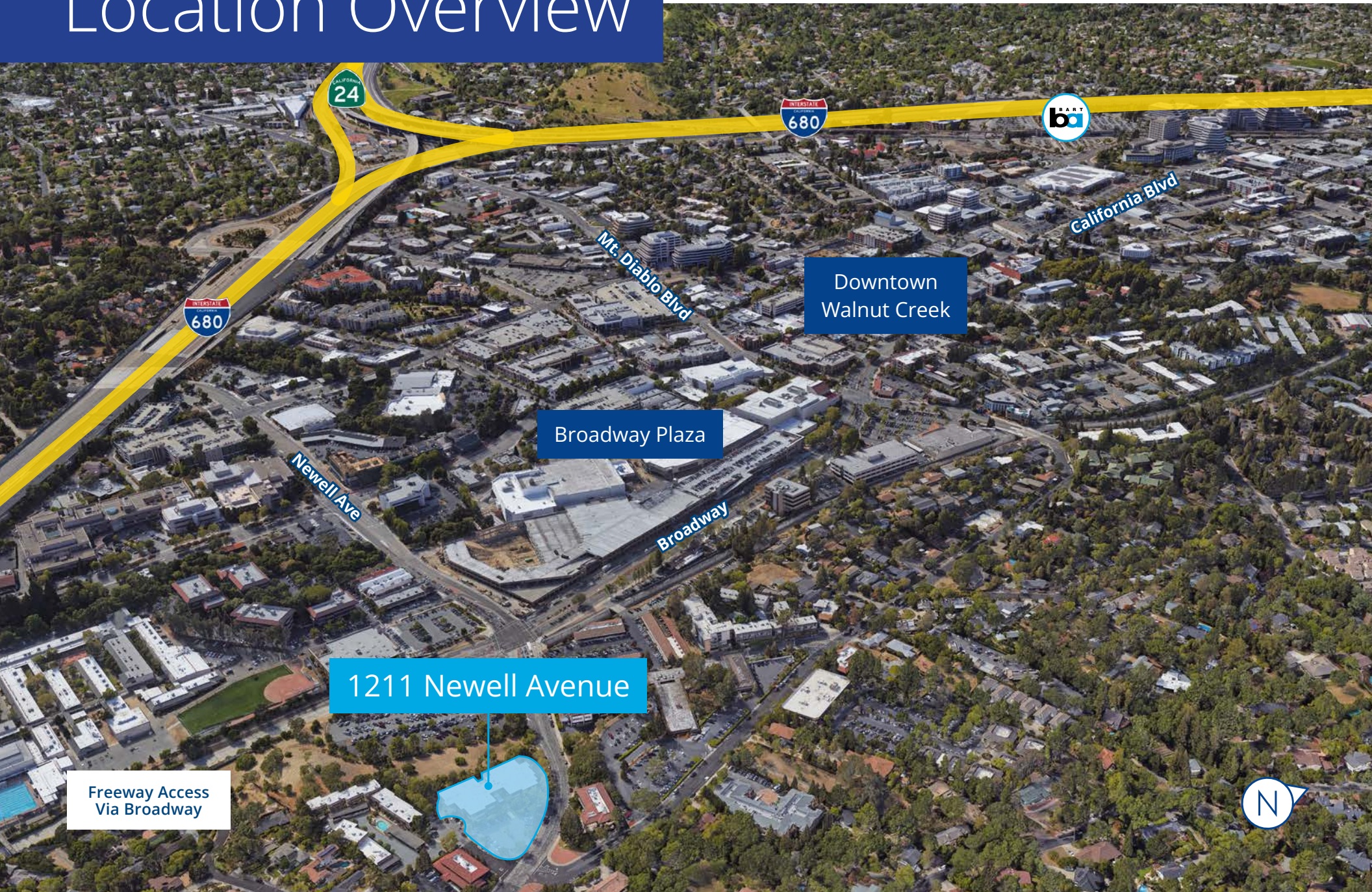
Information herein has been obtained from sources deemed reliable, however its accuracy cannot be guaranteed. The user is required to conduct their own due diligence and verification.

Newell Plaza Offices | Walnut Creek

Photo Gallery



Location Overview



24

680



680

Mt. Diablo Blvd

California Blvd

Downtown
Walnut Creek

Broadway Plaza

Newell Ave

Broadway

1211 Newell Avenue

Freeway Access
Via Broadway

