



Fenced office complex  
with secured parking

Colliers

For Lease | Professional Office Space

# Civic Executive Park

1450 Civic Court | Concord, CA

## Contact Brokers

### Brian Clack

Senior Vice President  
CA License No. 01416362  
brian.clack@colliers.com  
Direct: +1 925 279 4654  
Mobile: +1 415 407 7998

### Eric Erickson, SIOR

Executive Vice President  
CA License No. 01177336  
eric.erickson@colliers.com  
+1 925 279 5580



1450 Civic Court | Concord, CA

# Overview

## Highlights



Park-like setting with walkway benches, and mature landscaping



ADA complaint access with elevator



Close to retail amenities



Parking 4/1,000



Easy access to Hwy 242 and I-680 on/off of Willow Pass Road

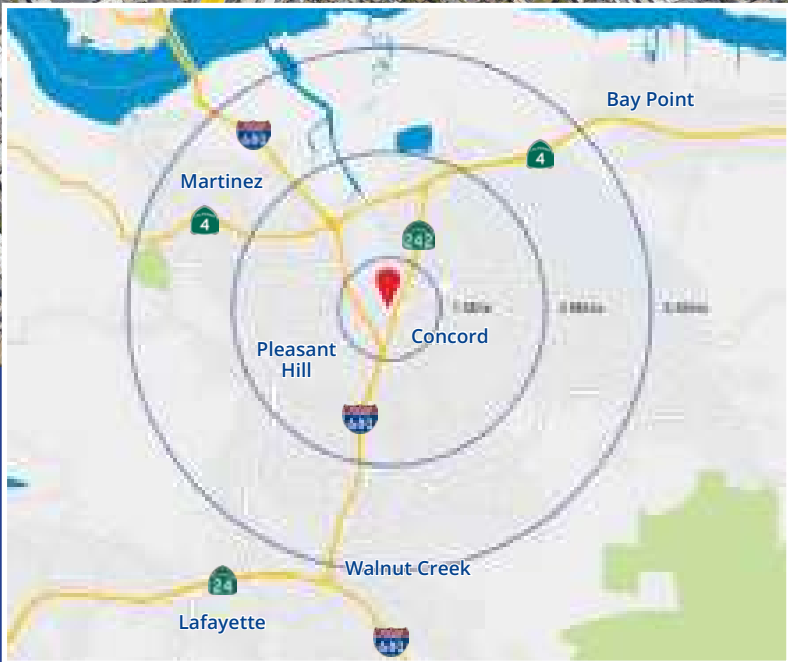
## Available Spaces

Building	Suite	Rentable Square Feet
A	200	±3,973 RSF
C	100	±3,976 RSF





# Location Overview



## Contact Brokers

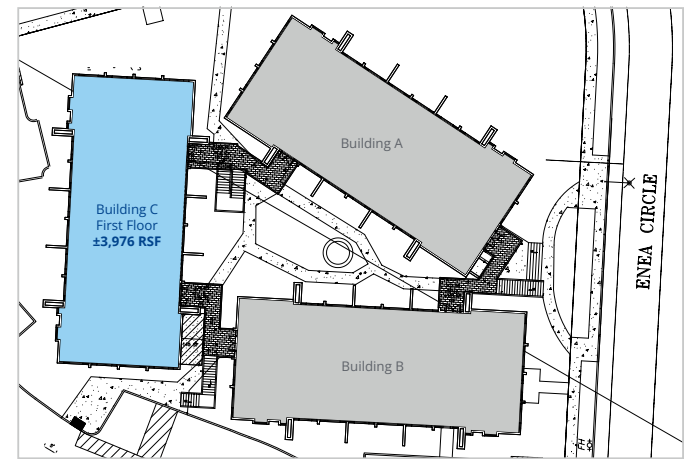
**Brian Clack**  
Senior Vice President  
CA License No. 01416362  
brian.clack@colliers.com  
Direct: +1 925 279 4654  
Mobile: +1 415 407 7998

**Eric Erickson, SIOR**  
Executive Vice President  
CA License No. 01177336  
eric.erickson@colliers.com  
+1 925 279 5580

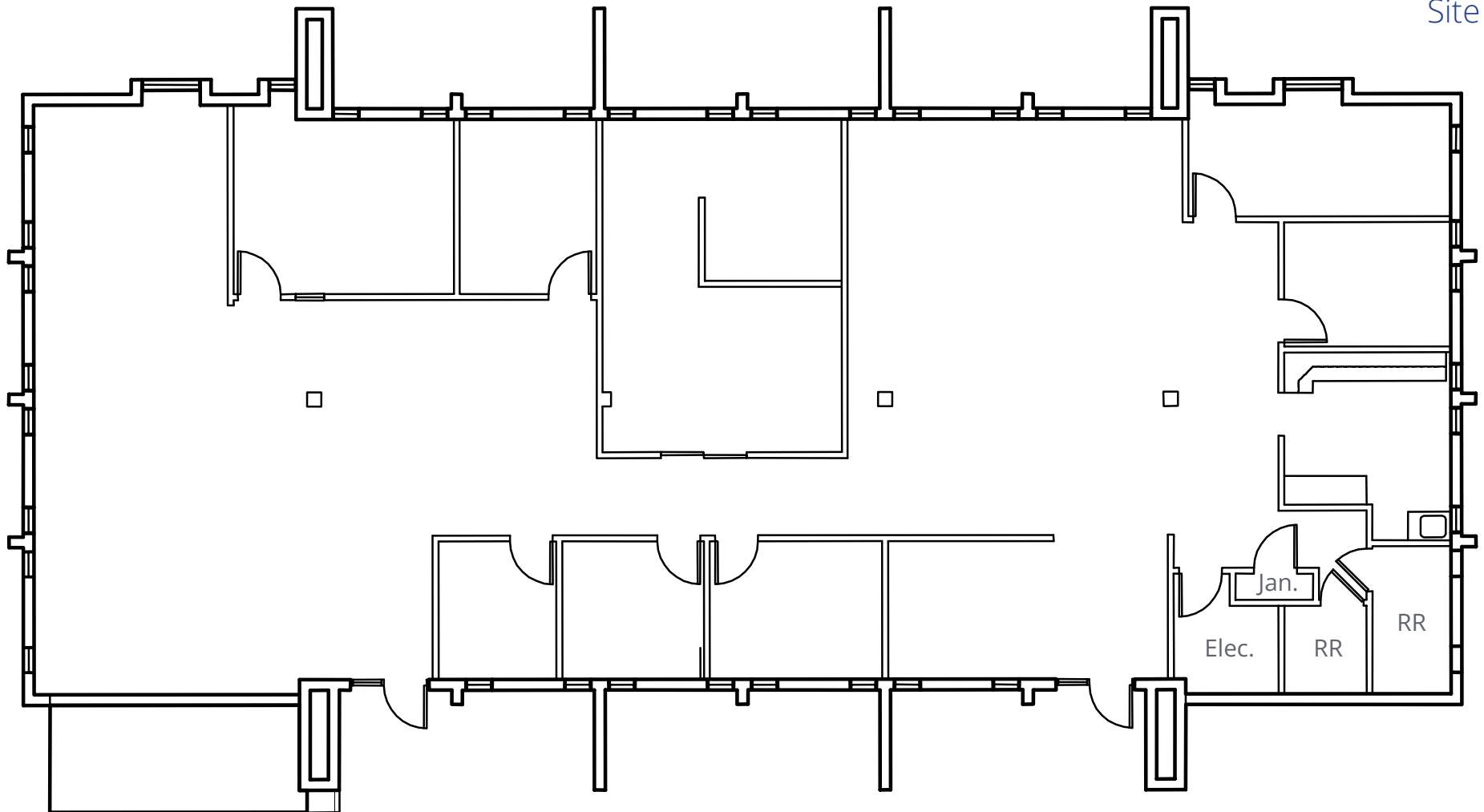


1450 Civic Court, Bldg. C | Concord, CA

First Floor  
±3,976 RSF

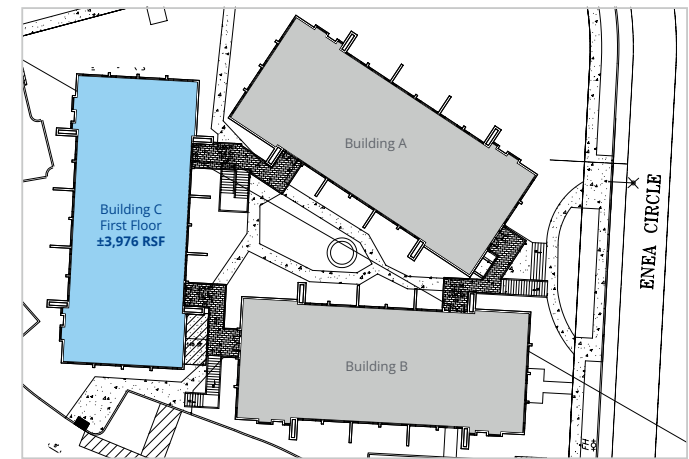


Site Plan

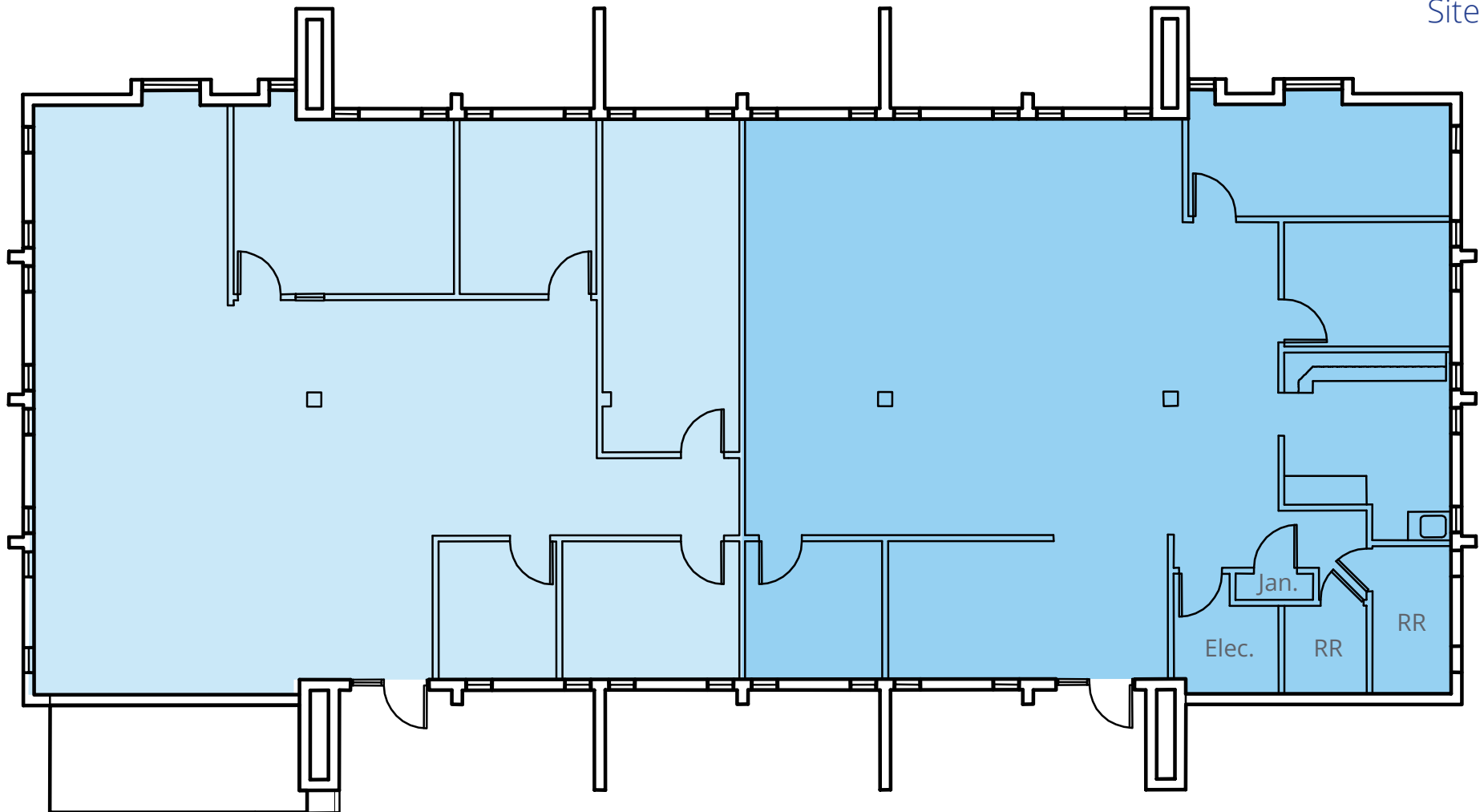


1450 Civic Court, Bldg. C | Concord, CA

# First Floor | $\pm 3,976$ RSF Hypothetical Demising

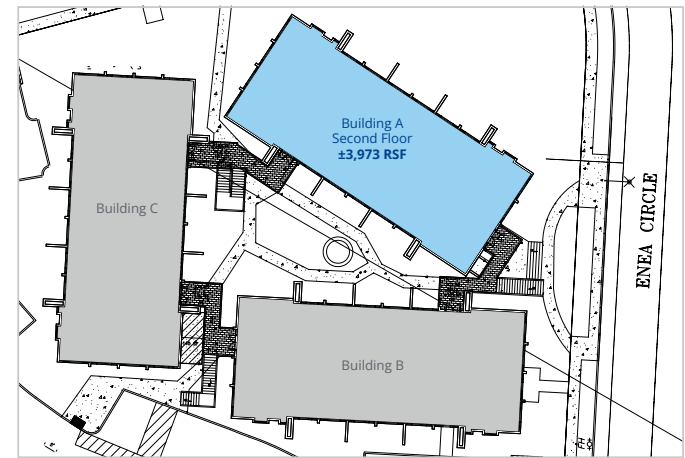


Site Plan

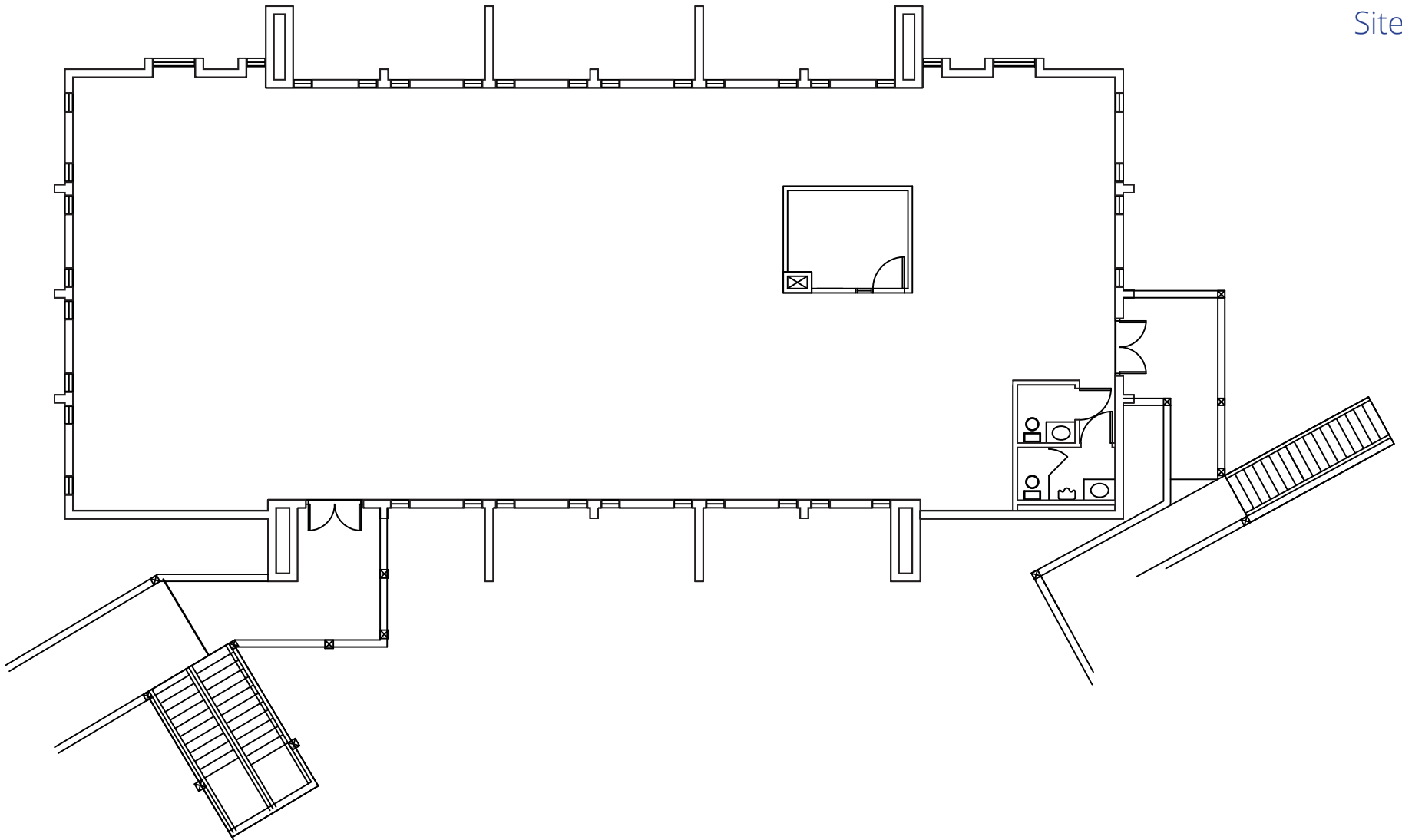


1450 Civic Court, Bldg. A | Concord, CA

# Second Floor ±3,973 RSF



Site Plan



1450 Civic Court, Bldg. A

# Photo Gallery

Open Office



Open Office



Open Office

